

CIGOGNE UCITS

M&A Arbitrage

Monthly Factsheet - June 2025



Assets Under Management :

64 232 695 €

Net Asset Value - C1 Shares :

1 299.94 €

INVESTMENT OBJECTIVES

The sub-fund's objective is to generate regular returns not correlated with the main market trends, in a context of risk controls. The choice of the assets is guided by an arbitration of mergers and/or acquisitions, consisting in benefiting from the price differences, which can appear at the time of takeover bids or exchange. Based on a solid and detailed analysis of the economic, legal and competitive frameworks, initiated operations are mainly held until the finalization of the offer. The portfolio only focuses on declared M&A situations. Initiated strategies consist in acquiring shares of the target company (cash offer) and selling shares of the acquirer (stock, cash and stock offer) or conversely if we expect the bid to fail. The sub-fund may also develop strategies on corporate action arbitrage such as preferential subscription rights.

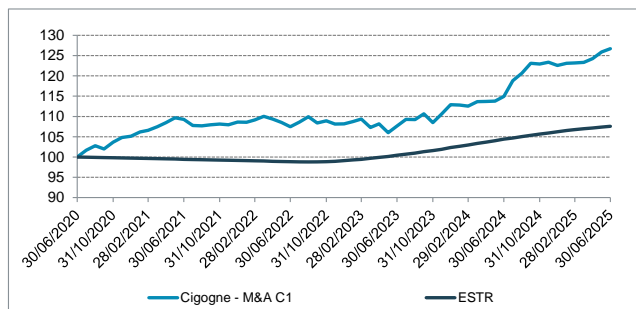
PERFORMANCES

| | January | February | March | April | May | June | July | August | September | October | November | December | YTD |
|------|---------|----------|--------|--------|--------|--------|--------|--------|-----------|---------|----------|----------|--------|
| 2025 | 0.43% | 0.07% | 0.13% | 0.72% | 1.34% | 0.65% | | | | | | | 3.38% |
| 2024 | -0.08% | -0.25% | 0.97% | 0.04% | 0.10% | 1.00% | 3.36% | 1.59% | 2.01% | -0.17% | 0.39% | -0.67% | 8.55% |
| 2023 | 0.55% | 0.55% | -1.88% | 0.79% | -2.01% | 1.58% | 1.48% | -0.03% | 1.31% | -1.98% | 1.97% | 2.10% | 4.39% |
| 2022 | -0.06% | 0.55% | 0.79% | -0.60% | -0.78% | -0.97% | 1.07% | 1.24% | -1.41% | 0.47% | -0.72% | 0.03% | -0.43% |
| 2021 | 1.00% | 0.37% | 0.82% | 0.96% | 1.08% | -0.34% | -1.38% | -0.11% | 0.26% | 0.16% | -0.15% | 0.62% | 3.32% |

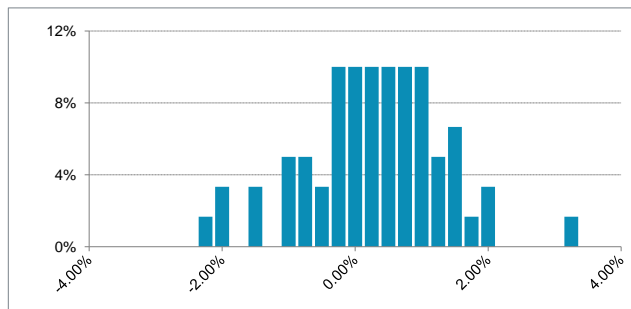
PORTFOLIO STATISTICS FOR 5 YEARS / SINCE 03/05/2013

| | Cigogne M&A Arbitrage | | ESTR | | HFRX Global Hedge Fund EUR Index | |
|-----------------------|-----------------------|------------|---------|------------|----------------------------------|------------|
| | 5 years | From Start | 5 years | From Start | 5 years | From Start |
| Cumulative Return | 26.71% | 29.99% | 7.57% | 5.13% | 8.96% | -1.02% |
| Annualised Return | 4.85% | 2.18% | 1.47% | 0.41% | 1.73% | -0.08% |
| Annualised Volatility | 3.52% | 4.29% | 0.26% | 0.20% | 3.18% | 4.07% |
| Sharpe Ratio | 0.96 | 0.41 | - | - | 0.08 | -0.12 |
| Sortino Ratio | 1.65 | 0.60 | - | - | 0.13 | -0.17 |
| Max Drawdown | -4.03% | -18.29% | -1.22% | -3.52% | -8.68% | -19.68% |
| Time to Recovery (m) | 3,23 | 52,62 | 8,31 | 16,15 | > 21 | > 65,31 |
| Positive Months (%) | 68.33% | 67.81% | 56.67% | 30.14% | 61.67% | 57.53% |

PERFORMANCE (NAV) FOR 5 YEARS



DISTRIBUTION OF MONTHLY RETURNS FOR 5 YEARS



INVESTMENT MANAGERS' COMMENTARY

At the end of the first half of the year, the M&A investment universe benefited from the official announcement of several deals, helping to maintain an attractive level of activity. The \$33 billion privatization of Toyota Industries by its parent company was the largest transaction by volume. In the United States, the merger between industrial equipment manufacturer Chart Industries and flow control systems specialist Flowserve is expected to create an entity valued at over \$19 billion. Meanwhile, French group Sanofi has made an \$8.3 billion offer to strengthen its position in the rare immunological diseases sector through the acquisition of U.S.-based Blueprint Medicines.

June was marked by mixed performance among portfolio strategies, but the overall momentum remains positive. This outcome is notably explained by the favorable developments in the Juniper Networks case. Its acquisition by Hewlett Packard received approval from the U.S. Department of Justice (DoJ), following divestitures and commitments made by the parties involved. It's worth noting that the regulator had filed a lawsuit in January to block the deal, arguing that it would reduce competition, increase prices, and limit consumer choice. The transaction, which carried a gross discount of 8.63% before the announcement, is now expected to close in early July. The month also saw positive contributions from strategies focused on the Small Caps segment, particularly due to the Datagroup case. The German IT service provider had its initial takeover offer raised by private equity fund KKR, which also proposed an additional premium if the 90% ownership threshold was surpassed. This announcement led to a more than 10% increase in the target company's share price in June. Lastly, under its voluntary share buyback program, Swedish energy company Dala Energi set its purchase price at 135 SEK per share, allowing the position to be closed out with a notable gain.

In terms of investments, a cautious approach prevailed in June. However, newly announced transactions still led to new positions being taken, notably in Blueprint Medicines and Couchbase. Given the current context, the focus has shifted to targeted arbitrage opportunities, favoring deals with a short remaining lifespan, such as Sumishin Net Bank in Japan, or North American transactions nearing completion like Everi Holdings and Springworks.

MAIN POSITIONS

| TARGET | ACQUIRER | WEIGHT | PAYMENT TYPE | TARGET SECTOR | GEOGRAPHICAL ZONE |
|-----------------------|------------------------|--------|--------------------|---------------------|-------------------|
| TRYT | CARLYLE GROUP | 4.79% | Cash | Industrial Services | Asia |
| SBI SUMISHIN NET BANK | NTT | 4.73% | Cash | Financial Services | Asia |
| ESR GROUP | AEON | 4.27% | Cash - Convertible | Real Estate | Asia |
| BLUEPRINT MEDICINES | SANOFI | 3.67% | Cash | Health Care | United States |
| COVESTRO | ABU DHABI NATIONAL OIL | 3.30% | Stock | Chemicals | Europe |

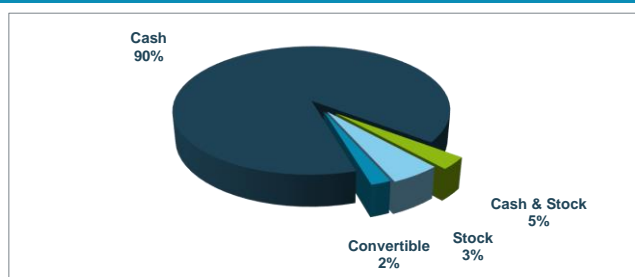
CIGOGNE UCITS

M&A Arbitrage

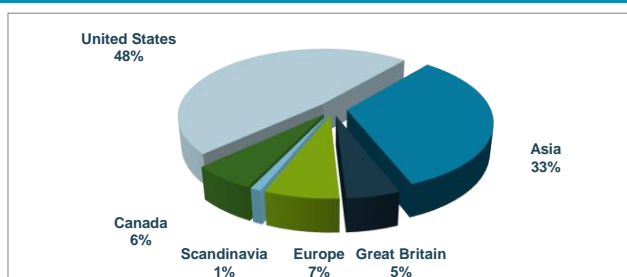
Monthly Factsheet - June 2025



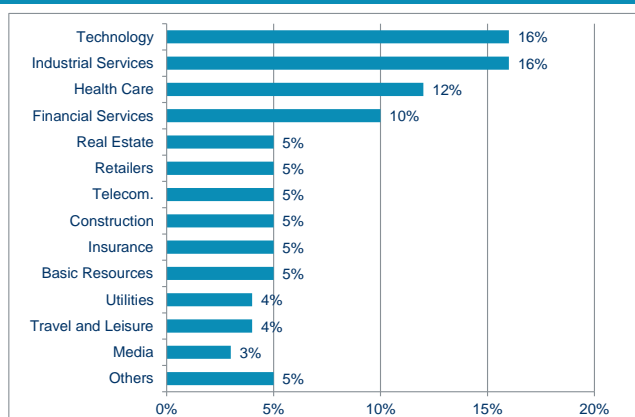
PAYMENT TYPE



GEOGRAPHICAL BREAKDOWN



SECTORIAL BREAKDOWN



PORTFOLIO STATISTICS

| | |
|---------------------------|-----|
| Number of strategies | 116 |
| New strategies | 21 |
| Closed strategies | 29 |
| Time to completion (days) | 71 |
| Small Cap (<750 MUSD) | 26% |
| Large Cap (>750 MUSD) | 74% |

RISK PROFILE



The risk category has been determined on the basis of historical and simulated data and may not be a reliable indication of the future risk profile. The risk and reward category shown does not necessarily remain unchanged and the categorization of the fund may shift over time.

CHARACTERISTICS

| | | | |
|-----------------------|-----------------------|-------------------------|---------------------------------------|
| Management Company | Cigogne Management SA | ISIN code | LU0893376664 |
| Advisor | CIC Marchés | Management Fee | 1,50% |
| Domiciliation | Luxembourg | Performance Fees | 20% above €STR with a High Water Mark |
| Fund's Inception Date | March 2013 | Subscription Fee | Up to 2% |
| Legal Form | SICAV UCITS | Redemption Fee | None |
| Valuation | Weekly, every Friday | Minimum Subscription | EUR 1.000 |
| Liquidity | Weekly | Subsequent Subscription | EUR 1.000 |
| Cut-Off | 2 Business Days | Country of Registration | LU, FR, BE, DE, CH, ES |
| Depository Bank | Banque de Luxembourg | | |
| Administrative Agent | UI efa | | |
| Auditor | KPMG Luxembourg | | |

DISCLAIMER

The information contained herein is provided for information purposes only and shall only be valid at the time it is given. No guarantee can be given as to the exhaustiveness, timeliness or accuracy of this information. Past performance is no indication of future returns. Any investment may generate losses or gains. The information on this document is not intended to be an offer or solicitation to invest or to provide any investment service or advice. Potentially interested persons must consult their own legal and tax advisor on the possible consequences under the laws of their country of citizenship or domicile. Any person must carefully consider the appropriateness of their investments to their specific situation and ensure that they understand the risks involved. Subscriptions to fund shares will only be accepted on the basis of the latest prospectus and the most recent annual report or semi-annual report if the latter is more recent.

CONTACTS

CIGOGNE MANAGEMENT S.A.

18 Boulevard Royal
L - 2449 Luxembourg
LUXEMBOURG

www.cigogne-management.com
contact@cigogne-management.com

